



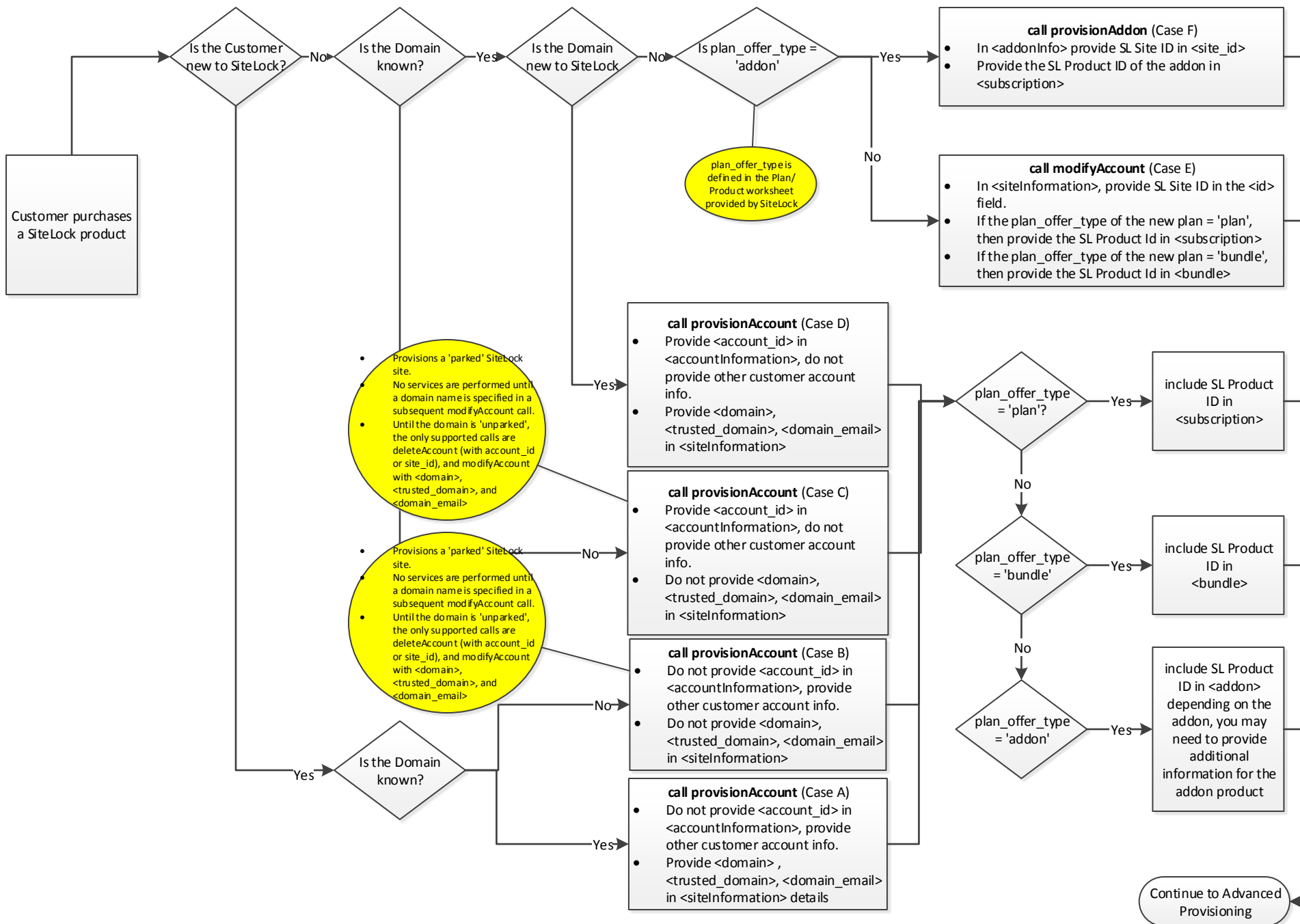
SiteLock Provisioning API

Quick Start Guide

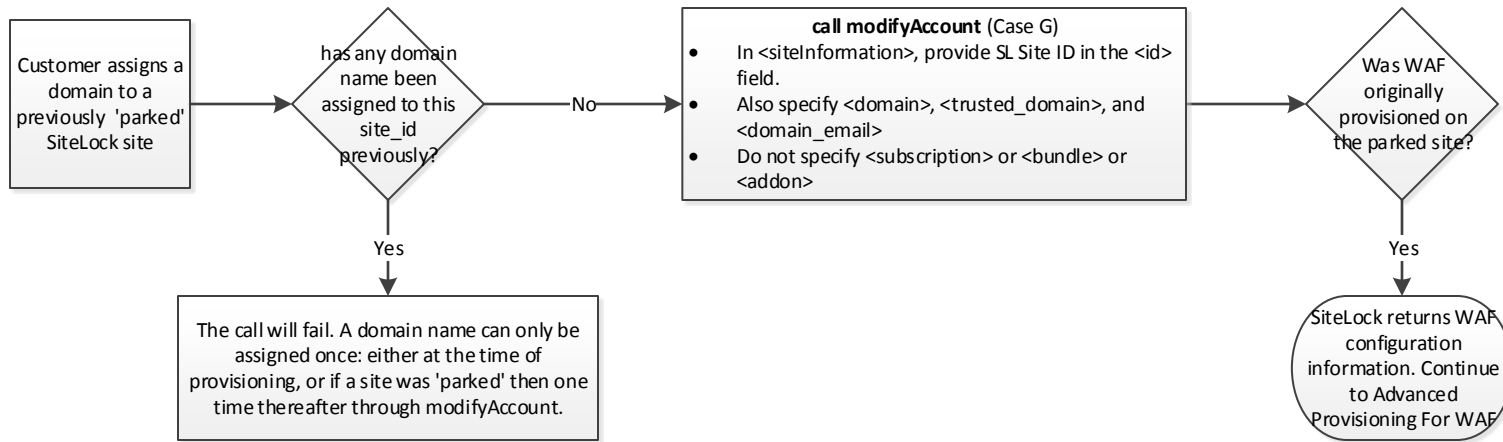
June 2015

Document Version: 2.21

Partner



Assigning a domain to a previously 'parked' site



Case A : Required Tags For Basic Provisioning

```
<?xml version="1.0" encoding="UTF-8" standalone="yes" ?>
<SiteLockOnlineRequest>
  <authentication>
    <user>Partner's API login ID</user>
    <password>Partner's API password</password>
    <partner>Partner's Brand or Sub Partner name</partner>
  </authentication>
  <provisionAccount type="live">
    <accountInformation>
      <name>customer name</name>
      <email>customer email id used as login</email>
      <password>password created for customer by partner</password>
    </accountInformation>
    <siteInformation>
      <domain>customer's domain name</domain>
      <!-- This field must contain either 'yes' or 'no' based on whether
the domain has been verified by the partner -->
      <trustedDomain>yes</trustedDomain>
      <!-- When provisioning a SL Product with plan_offer_type = 'plan' -->
      <subscription>SL Product ID from product worksheet</subscription>
      <!--
          When provisioning an SL Product with plan_offer_type = 'bundle'
          use the <bundle> tag instead of <subscription>
          When provisioning an SL Product with plan_offer_type = 'addon'
          use the <addon> tag instead of <subscription>; <addon> products
          may require additional required fields. Please see the SiteLock
          Partner API document for a list of required fields for the addon in question.
      -->
    </siteInformation>
  </provisionAccount>
</SiteLockOnlineRequest>
```

Case B : Required Tags For Basic Provisioning

```
<?xml version="1.0" encoding="UTF-8" standalone="yes" ?>
<SiteLockOnlineRequest>
  <authentication>
    <user>Partner's API login ID</user>
    <password>Partner's API password</password>
    <partner>Partner's Brand or Sub Partner name</partner>
  </authentication>
  <provisionAccount type="live">
    <accountInformation>
      <name>customer name</name>
      <email>customer email id used as login</email>
      <password>password created for customer by partner</password>
    </accountInformation>
    <siteInformation>
      <!-- Please note that domain name should not be specified -->
      <!-- When provisioning a SL Product with plan_offer_type = 'plan' -->
      <subscription>SL Product ID from product worksheet</subscription>
      <!--
        When provisioning an SL Product with plan_offer_type = 'bundle'
        use the <bundle> tag instead of <subscription>
        When provisioning an SL Product with plan_offer_type = 'addon'
        use the <addon> tag instead of <subscription>; <addon> products
        may require additional required fields. Please see the SiteLock
        Partner API document for a list of required fields for the addon in question.
      -->
    </siteInformation>
  </provisionAccount>
</SiteLockOnlineRequest>
```

Case C : Required Tags For Basic Provisioning

```
<?xml version="1.0" encoding="UTF-8" standalone="yes" ?>
<SiteLockOnlineRequest>
  <authentication>
    <user>Partner's API login ID</user>
    <password>Partner's API password</password>
  </authentication>
  <provisionAccount type="live">
    <accountInformation>
      <account_id>SiteLock's customer account ID</account_id>
    </accountInformation>
    <siteInformation>
      <!-- Please note that domain name should not be specified -->
      <!-- When provisioning a SL Product with plan_offer_type = 'plan' -->
      <subscription>SL Product ID from product worksheet</subscription>
      <!--
        When provisioning an SL Product with plan_offer_type = 'bundle'
        use the <bundle> tag instead of <subscription>
        When provisioning an SL Product with plan_offer_type = 'addon'
        use the <addon> tag instead of <subscription>; <addon> products
        may require additional required fields. Please see the SiteLock
        Partner API document for a list of required fields for the addon in question.
      -->
    </siteInformation>
  </provisionAccount>
</SiteLockOnlineRequest>
```

Case D : Required Tags For Basic Provisioning

```
<?xml version="1.0" encoding="UTF-8" standalone="yes" ?>
<SiteLockOnlineRequest>
  <authentication>
    <user>Partner's API login ID</user>
    <password>Partner's API password</password>
  </authentication>
  <provisionAccount type="live">
    <accountInformation>
      <account_id>SiteLock's customer account ID</account_id>
    </accountInformation>
    <siteInformation>
      <domain>customer's domain name</domain>
      <!-- This field must contain either 'yes' or 'no' based on whether
the domain has been verified by the partner-->
      <trustedDomain>yes</trustedDomain>
      <!-- When provisioning a SL Product with plan_offer_type = 'plan' -->
      <subscription>SL Product ID from product worksheet</subscription>
      <!--
          When provisioning an SL Product with plan_offer_type = 'bundle'
          use the <bundle> tag instead of <subscription>
          When provisioning an SL Product with plan_offer_type = 'addon'
          use the <addon> tag instead of <subscription>; <addon> products
          may require additional required fields. Please see the SiteLock
          Partner API document for a list of required fields for the addon in question.
      -->
    </siteInformation>
  </provisionAccount>
</SiteLockOnlineRequest>
```

Case E : Required Tags For Basic Provisioning

```
<?xml version="1.0" encoding="UTF-8" standalone="yes" ?>
<SiteLockOnlineRequest>
  <authentication>
    <user>Partner's API login ID</user>
    <password>Partner's API password</password>
  </authentication>
  <modifyAccount type="live">
    <accountInformation>
      <account_id>SiteLock's customer account ID</account_id>
    </accountInformation>
    <siteInformation>
      <id>SiteLock's customer Site ID</id>
      <!-- When provisioning a SL Product with plan_offer_type = 'plan' -->
      <subscription>SL Product ID from product worksheet</subscription>
      <!--
        When provisioning an SL Product with plan_offer_type = 'bundle'
        use the <bundle> tag instead of <subscription>
      -->
    </siteInformation>
  </modifyAccount>
</SiteLockOnlineRequest>
```


Case F : Required Tags For Basic Provisioning

```
<?xml version="1.0" encoding="UTF-8" standalone="yes" ?>
<SiteLockOnlineRequest>
  <authentication>
    <user>Partner's API login ID</user>
    <password>Partner's API password</password>
  </authentication>
  <provisionAddon>
    <addonInfo>
      <site_id>SiteLock's customer site ID</site_id>
      <subscription>SL Product ID from product worksheet</subscription>
    </addonInfo>
  </provisionAddon>
</SiteLockOnlineRequest>
```

Case G : Assigning a domain name to a 'parked' SiteLock Site

```
<?xml version="1.0" encoding="UTF-8" standalone="yes" ?>
```

```
<SiteLockOnlineRequest>
```

```
  <authentication>
```

```
    <user>Partner's API login ID</user>
```

```
    <password>Partner's API password</password>
```

```
  </authentication>
```

```
  <modifyAccount>
```

```
    <siteInformation>
```

```
      <id>SiteLock's customer site ID</id>
```

```
      <domain>name of the domain</domain>
```

```
      <trusted_domain>'yes' if domain ownership has been verified</trusted_domain>
```

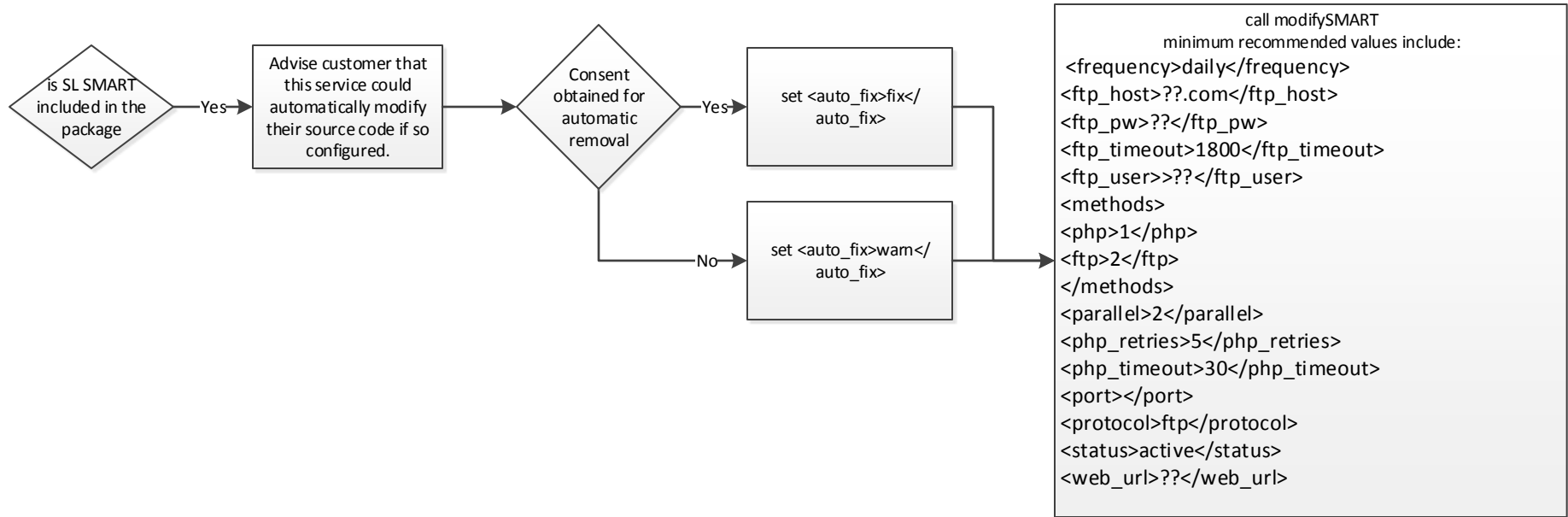
```
      <domain_email>email id associated with this domain</domain_email>
```

```
    </siteInformation>
```

```
  </modifyAccount>
```

```
</SiteLockOnlineRequest>
```

Partner



Partner

